



Frontenac Biothon 2010



Frontenac Bird Studies (FBS) was created by the Migration Research Foundation (MRF) in 2009 to strengthen the capacity for protection of bird populations and habitats in the Frontenac Arch. We operate Ontario's largest network of Monitoring Avian Productivity and Survivorship stations, monitor population trends and demographics and prioritize studies for species of high conservation concern.

Frontenac Biothon 2010

The Frontenac Biothon is a new initiative for FBS in 2010. The biothon is a sponsored 24-hour inventory of flora and fauna that raises critical funds for our operations while contributing to science and conservation at the same time!

This year, our dedicated teams of biologists will be flipping rocks, mothing and birding for 24 hours from June 12-13 in Frontenac Provincial Park. Our eyes and ears will be tuned for many Species at Risk, including Cerulean Warbler, Five-lined Skink and Purple Twayblade to name a few. The information we collect will be valuable to our studies, Ontario Parks and the Natural Heritage Information Centre.

Frontenac Bird Studies is a program of the Migration Research Foundation - a registered charitable organization in the U.S and Canada. All sponsors receive a tax-creditable receipt for donations over \$10. You can sponsor the Frontenac Biothon by mail (with attached form) or online through Paypal. 100% of donations will go directly to support FBS programs.

2010 Biothon Participants (Click to sponsor via Paypal)

[Julia Marko Dunn and Chris Dunn](#)

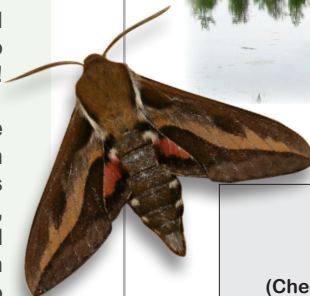
[Seabrooke Leckie and Dan Derbyshire](#)

[Karina Dykstra and Steve Gillis](#)

What is the Frontenac Arch?

The Frontenac Arch is an ancient southerly extension of the Canadian Shield in eastern Ontario. Over a billion years old, the Frontenac Arch is considered the formative "backbone" of Eastern North America. The Arch lies at a unique convergence of continental ecozones - creating the highest biodiversity in Eastern Canada and an extensive list of nationally rare and declining species. The landform is also an important habitat corridor for the migration and dispersal of wildlife.

Visit us at www.frontenacbirds.ca!



Sponsor Form

(Cheques are payable to Migration Research Foundation)

Name: _____

Address: _____

City: _____

Province: _____

Postal Code: _____

Email: _____

Phone: () _____

Amount Per Species: \$ _____

Flat Rate Amount: \$ _____

Tax receipts are automatically issued by Migration Research Foundation to all sponsors donating \$10.00 or more.